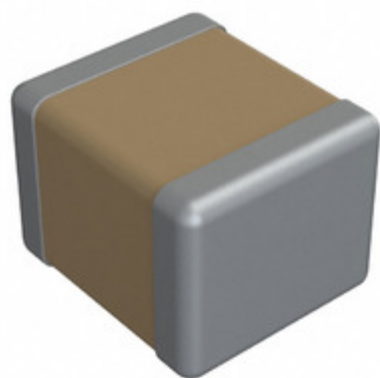


2220J1K00100FFR



Images are for reference only.
See Product Specifications for product details.
Buy 2220J1K00100FFR with confidence from
Component-World.HK, 1 Year Warranty



Part Number: [2220J1K00100FFR](#)
Manufacturer: [Knowles Syfer](#)
Description: CAP CER 10PF 1KV C0G/NP0 2220
Data sheet: [MLCC High Reliability Datasheet](#)

RoHS Status: Lead free / RoHS Compliant
Ship From: Hong Kong
Shipment Way: DHL/Fedex/TNT/UPS/EMS

[Request For Quotation](#)

PRODUCT PARAMETER

Part Number	2220J1K00100FFR	Manufacturer	Knowles Syfer
Description	CAP CER 10PF 1KV C0G/NP0 2220	Lead Free Status / RoHS Status	Lead free / RoHS Compliant
Quantity Available	13734 pcs	Data sheet	MLCC High Reliability Datasheet
Category	Capacitors	Voltage - Rated	1000V (1kV)
Tolerance	±1%	Thickness (Max)	0.098" (2.50mm)
Temperature Coefficient	C0G, NP0	Size / Dimension	0.224" L x 0.197" W (5.70mm x 5.00mm)
Series	-	Ratings	-
Packaging	Tape & Reel (TR)	Package / Case	2220 (5750 Metric)
Operating Temperature	-55°C ~ 125°C	Mounting Type	Surface Mount, MLCC
Moisture Sensitivity Level (MSL)	1 (Unlimited)	Manufacturer Standard Lead Time	8 Weeks
Lead Style	-	Lead Spacing	-
Lead Free Status / RoHS Status	Lead free / RoHS Compliant	Height - Seated (Max)	-
Features	High Temperature	Failure Rate	-
Detailed Description	10pF ±1% 1000V (1kV) Ceramic Capacitor C0G, NP0 2220 (5750 Metric)	Capacitance	10pF
Applications	High Reliability		

Component-World.com is a Reliable Stocking Distributor of Electronic Components. We specialize in all Knowles Syfer series electronic components. We have 13734 pieces of Knowles Syfer 2220J1K00100FFR in stock available now. Request a quote from electronics components distributor at Component-World.com, our sales team will contact you within 24 hours.
RFQ Email: info@Components-World.com

RELATED PRODUCTS

	Part#: 2220J1K00100JCR Description: CAP CER 10PF 1KV C0G/NP0 2220	Manufacturers: Knowles Syfer	RFQ
	Part#: 2220J1K00100JFT Description: CAP CER 10PF 1KV C0G/NP0 2220	Manufacturers: Knowles Syfer	RFQ
	Part#: 2220J1K00100GCR Description: CAP CER 2220	Manufacturers: Knowles Syfer	RFQ
	Part#: 2220J1000824KXT Description: CAP CER 0.82UF 100V X7R 2220	Manufacturers: Knowles Syfer	RFQ
	Part#: 2220J1000824KXR Description: CAP CER 0.82UF 100V X7R 2220	Manufacturers: Knowles Syfer	RFQ
	Part#: 2220J1000824MXR Description: CAP CER 0.82UF 100V X7R 2220	Manufacturers: Knowles Syfer	RFQ
	Part#: 2220J1000824KDR Description: CAP CER 0.82UF 100V X7R 2220	Manufacturers: Knowles Syfer	RFQ
	Part#: 2220J1K00100GFT Description: CAP CER 10PF 1KV C0G/NP0 2220	Manufacturers: Knowles Syfer	RFQ
	Part#: 2220J1000824MDT Description: CAP CER 0.82UF 100V X7R 2220	Manufacturers: Knowles Syfer	RFQ
	Part#: 2220J1000824KDT Description: CAP CER 0.82UF 100V X7R 2220	Manufacturers: Knowles Syfer	RFQ
	Part#: 2220J1K00100FFT Description: CAP CER 10PF 1KV C0G/NP0 2220	Manufacturers: Knowles Syfer	RFQ
	Part#: 2220J1K00100JFR Description: CAP CER 10PF 1KV C0G/NP0 2220	Manufacturers: Knowles Syfer	RFQ
	Part#: 2220J1K00100JCT Description: CAP CER 10PF 1KV C0G/NP0 2220	Manufacturers: Knowles Syfer	RFQ
	Part#: 2220J1K00100GCT Description: CAP CER 2220	Manufacturers: Knowles Syfer	RFQ
	Part#: 2220J1000824MXT Description: CAP CER 0.82UF 100V X7R 2220	Manufacturers: Knowles Syfer	RFQ
	Part#: 2220J1K00100KCR Description: CAP CER 10PF 1KV C0G/NP0 2220	Manufacturers: Knowles Syfer	RFQ
	Part#: 2220J1K00100FCT Description: CAP CER 10PF 1KV C0G/NP0 2220	Manufacturers: Knowles Syfer	RFQ
	Part#: 2220J1000824MDR Description: CAP CER 0.82UF 100V X7R 2220	Manufacturers: Knowles Syfer	RFQ
	Part#: 2220J1K00100GFR Description: CAP CER 10PF 1KV C0G/NP0 2220	Manufacturers: Knowles Syfer	RFQ
	Part#: 2220J1K00100FCR Description: CAP CER 10PF 1KV C0G/NP0 2220	Manufacturers: Knowles Syfer	RFQ

Related keywords for 2220J1K00100FFR

Knowles Syfer 2220J1K00100FFR	2220J1K00100FFR distributor	2220J1K00100FFR supplier	2220J1K00100FFR price
2220J1K00100FFR download datasheet	2220J1K00100FFR datasheet	2220J1K00100FFR stock	buy 2220J1K00100FFR
Knowles Syfer 2220J1K00100FFR	Syfer 2220J1K00100FFR		